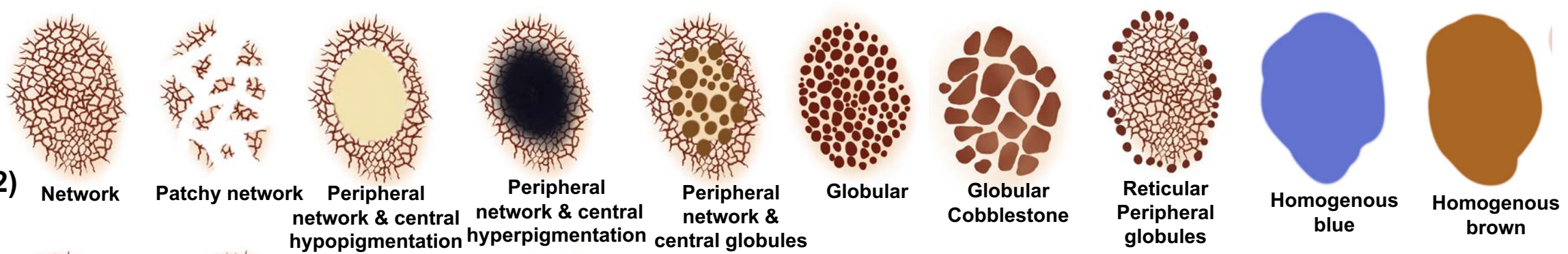
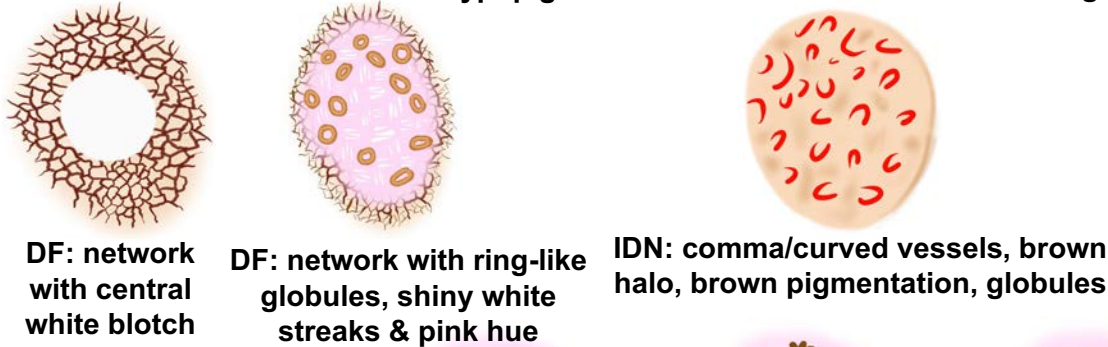


Step 1

1. Nevus (also, see card 2)



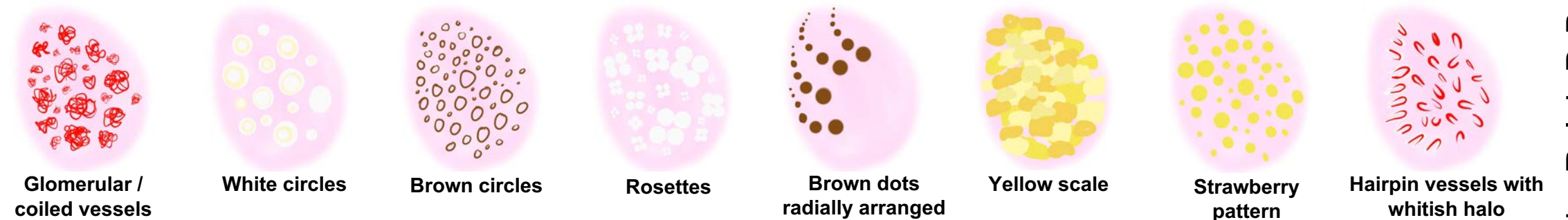
2. DF/IDN



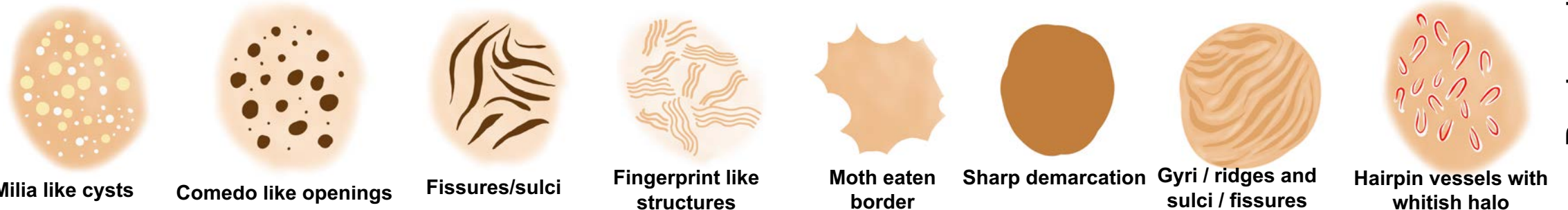
3. BCC



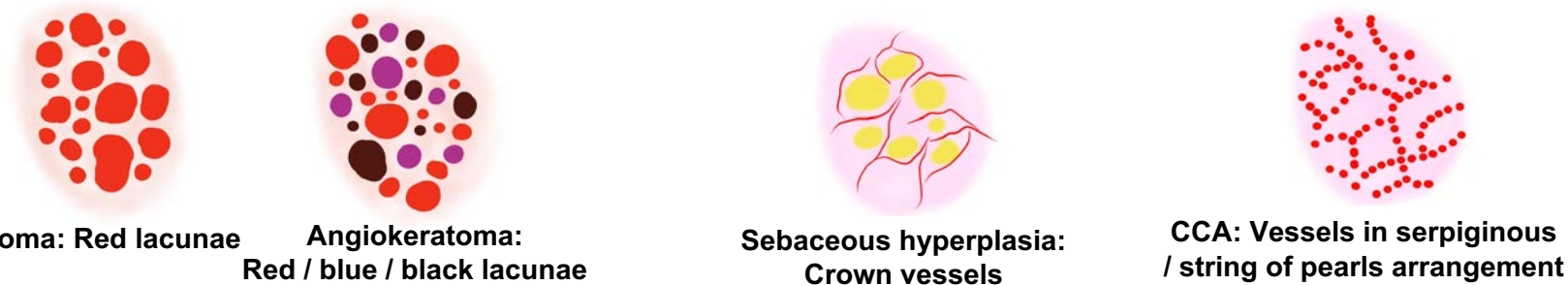
4. SCC



5. Seb K



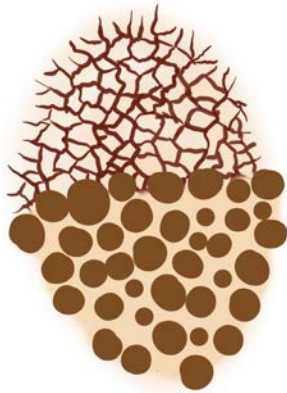
6. Other



Step 2: Look for melanoma patterns & structures (Card 2&3)

Nevus patterns that require context

(melanoma should be in the differential)



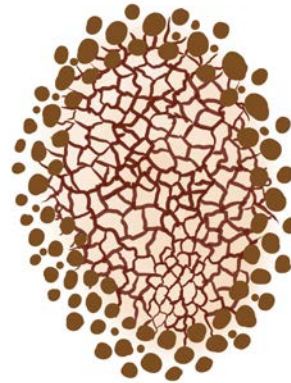
Two component pattern
Kissing nevus



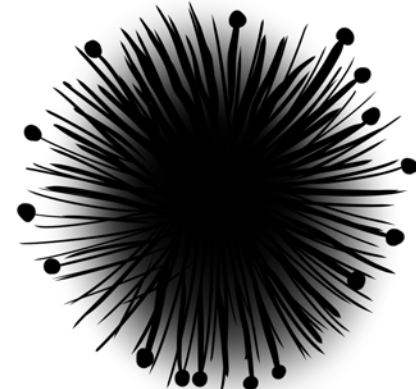
Structureless tan / pink pattern
Nevi in skin type 1



Multi component pattern
Symmetric



Tiered globular pattern
Spitz / Reed



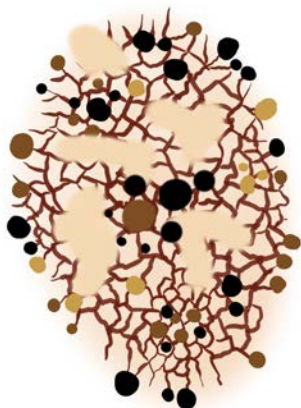
Starburst pattern
Spitz / Reed



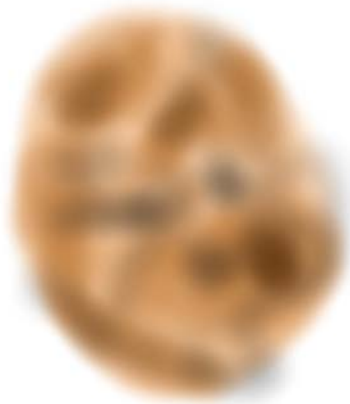
Melanoma pattern:

1. Do not manifest any of the benign nevus patterns depicted on card 1
2. Usually display a multicomponent disorganized pattern with at least one melanoma specific structure depicted on (Card 3)
3. Can be structureless or featureless or blue-black in color (non-specific or feature-poor)
4. On sun-damaged skin they often appear as large lentiginous lesions with the patterns shown below

Melanoma on sun damaged skin



Multi component
pattern asymmetric



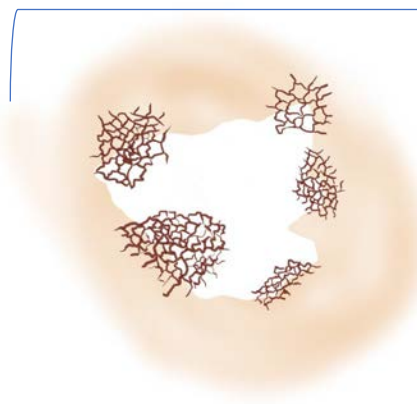
Structureless brown



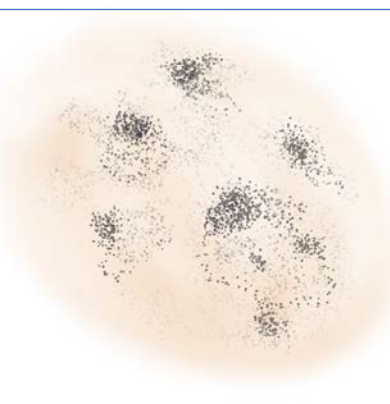
Structureless:
Blue black nodule



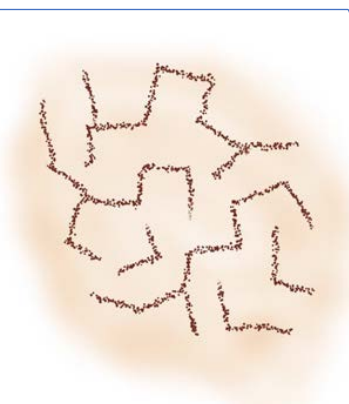
Structureless:
Pink / tan macule



patchy peripheral pigmented
islands or hyperpigmented foci



Tan structureless areas
with granularity



Angulated line
pattern

Melanoma specific structures



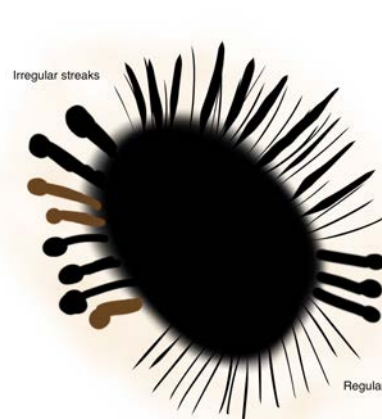
Atypical network



Angulated lines



Negative network



Atypical streaks



Atypical dots and globules



Tan structureless areas



Prominent skin markings

Regression structures



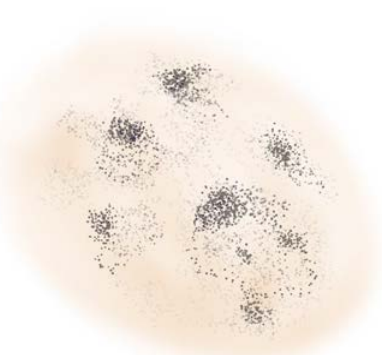
multiple small hyperpigmented areas



Atypical blotches



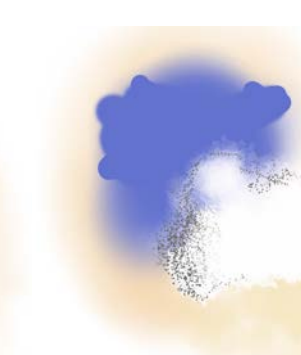
Raised blue white structureless area Blue white veil



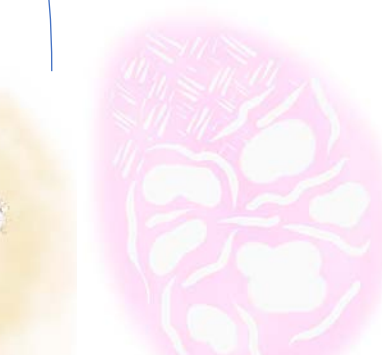
Granularity / peppering



Regression scarlike depigmentation and peppering

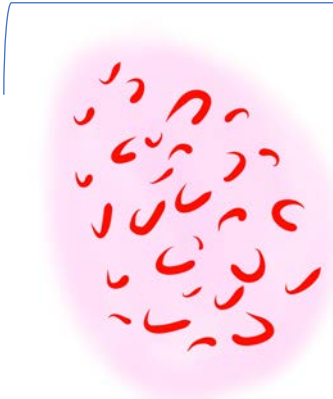


Flat blue white structureless area

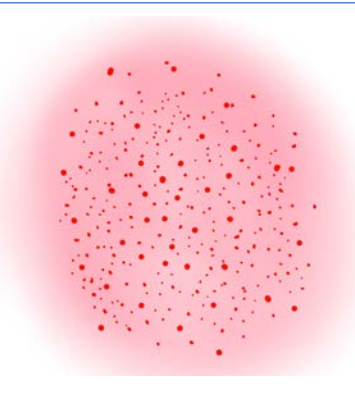


Shiny white structures

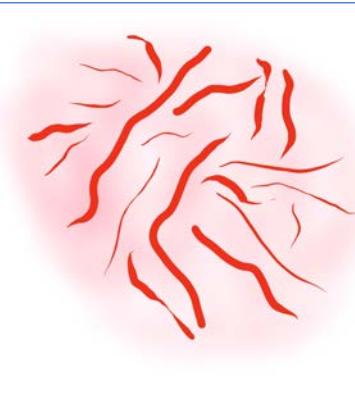
Atypical vascular patterns



Comma / curved vessels



Dotted vessels



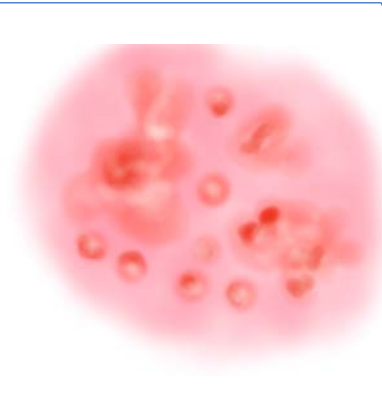
Serpentine vessels



Corkscrew vessels



Polymorphous vessels



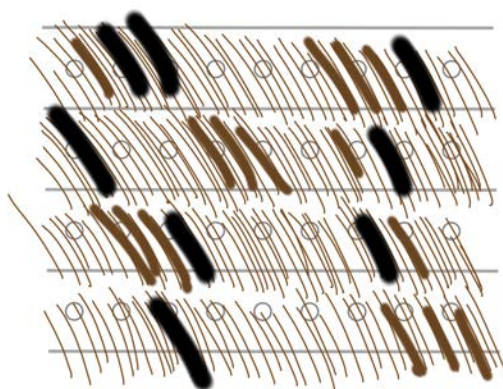
Milky red areas / milky red globules

Melanoma specific pattern: special locations

Palms and soles



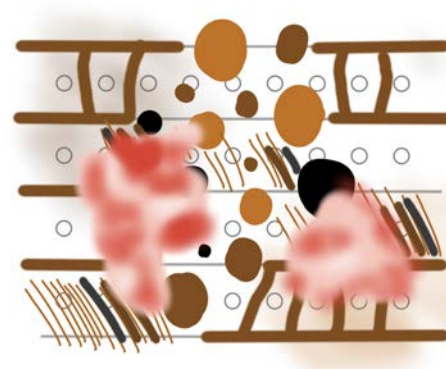
Parallel ridge pattern



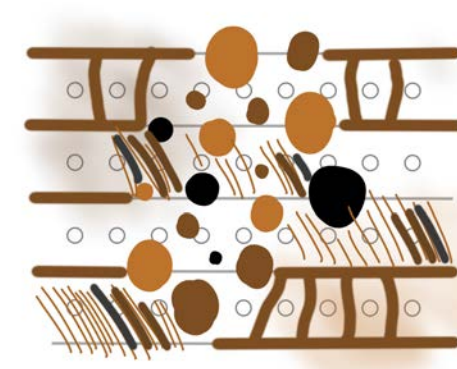
Atypical fibrillar pattern



Diffuse pigmentation with multiple shades of brown

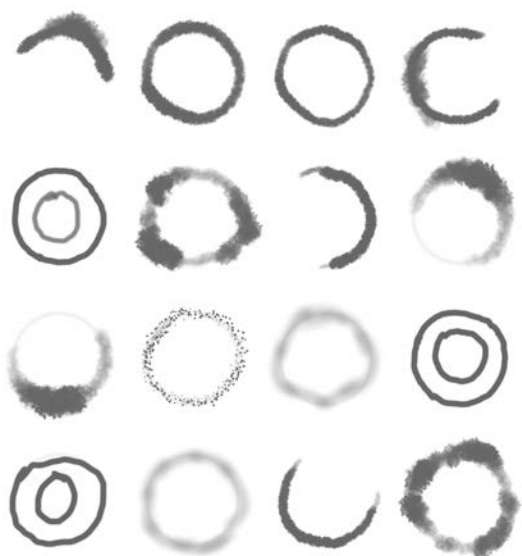


Milky red areas

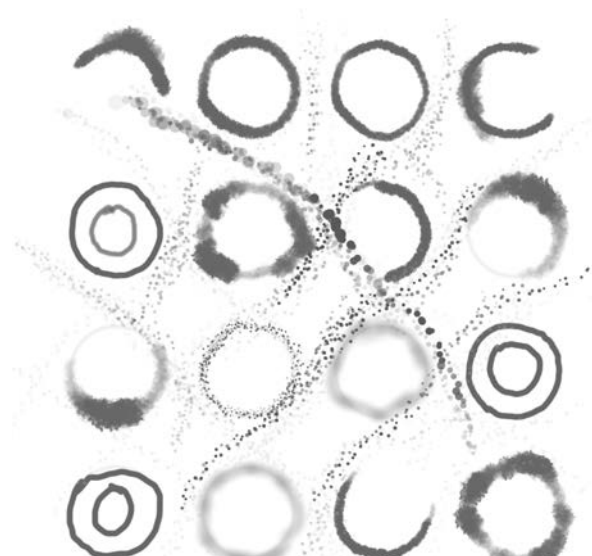


Multi-component pattern

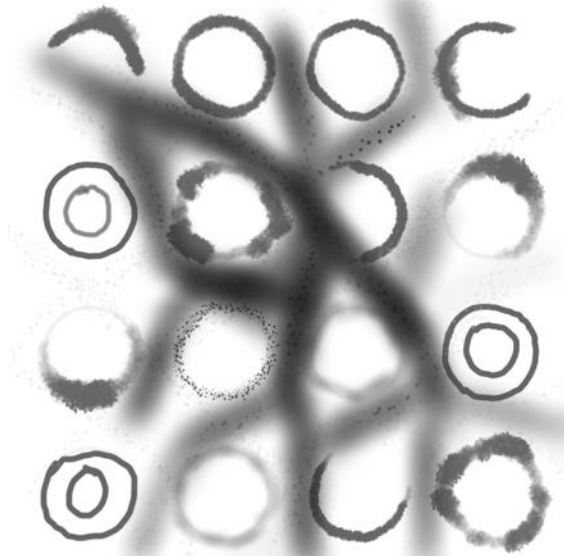
Face



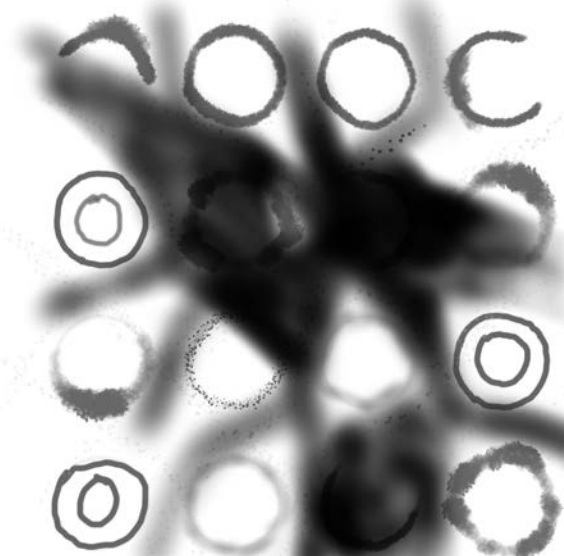
Pigmented follicular openings



Annular granular pattern



Rhomboidal structures



Dark blotches and obliterated hair follicles

Nails



Nail pigmentation

Melanin inclusions ?

No

Yes

non melanocytic

melanocytic



Hemorrhage



Fungus Pseudomonas



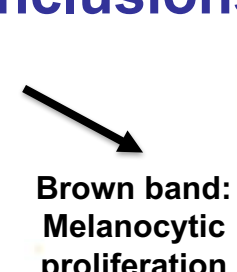
dermoscopedia.org

Melanin inclusions



Grey band

Lentigo: melanocytic activation



Brown band: Melanocytic proliferation



Brown regular: nevus



Brown irregular: melanoma

Designed by Ralph P. Braun & Ashfaq A. Marghoob