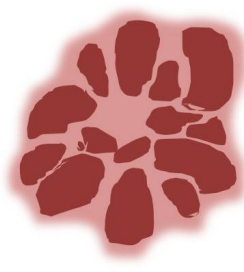
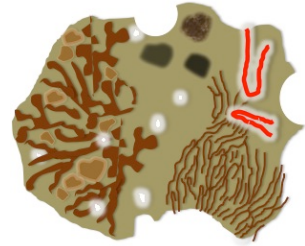


# Skin Lesion

## Unequivocal Lesion?

Dermatofibroma\* Seborrheic keratosis\* Hemangioma



Yes

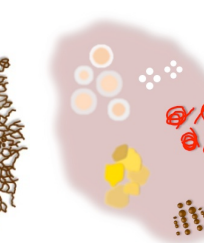
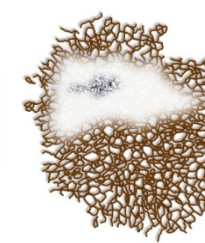
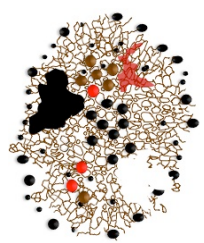
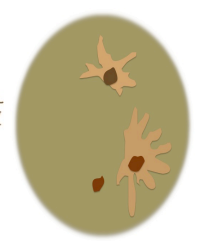
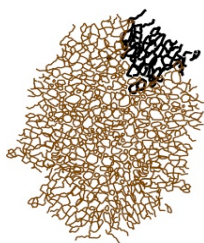
Monitor or reassure\*\*

No



## Disorganized pattern?

Asymmetric distribution of colors or structures



Yes

Biopsy or refer

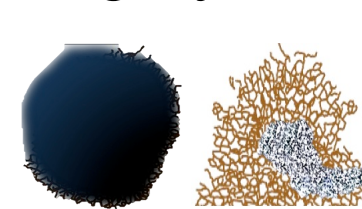
No

## Organized lesion with any of the following?

Starburst pattern



Blue-black or gray color



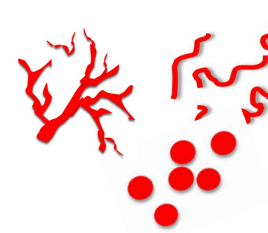
Shiny white structures



Negative network



Vessels



Ulceration+



Yes

Biopsy or refer

No

Monitor\*\*

★ Algorithm is based on the use of **polarized dermoscopy**

\* Diagnosis of DF and SK may require toggling between PD & NPD.

\*\* Patients should continue self-monitoring & changes in morphology or symptoms should raise concern.

+ Ulceration without history of trauma.

\*\* Monitoring can include short-, long- or self-monitoring for change.

## Triage Amalgamated Dermoscopic Algorithm

Concept and design by Natalia Jaimes, MD and Ashfaq A. Marghoob, MD

This algorithm is for lesions on non-glabrous skin. It does not apply to lesions on palms, soles, nails and mucosae.

Updated 01/17