

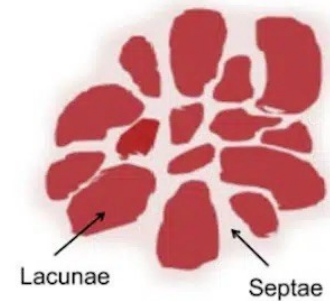
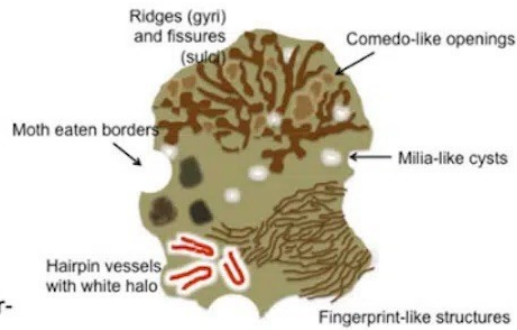
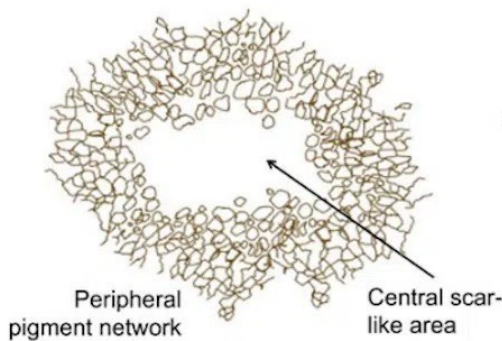
**TADA Step-1: Is the lesion an unequivocal DF, SK or angioma?**

Determine whether the lesion is clinically and dermoscopically an unequivocal:

**Dermatofibroma<sup>+</sup> (DF)**

**Seborrheic Keratosis<sup>++</sup> (SK)**

**Angioma**



**TADA Step-2\*: Does the lesion have a disorganized pattern?**



Determine if the lesion has a dermoscopically *organized* or *disorganized* pattern (i.e. chaotic or disorganized distribution of colors and structures)

**TADA Step-3\*\*: Does the organized lesion manifest any of the following**

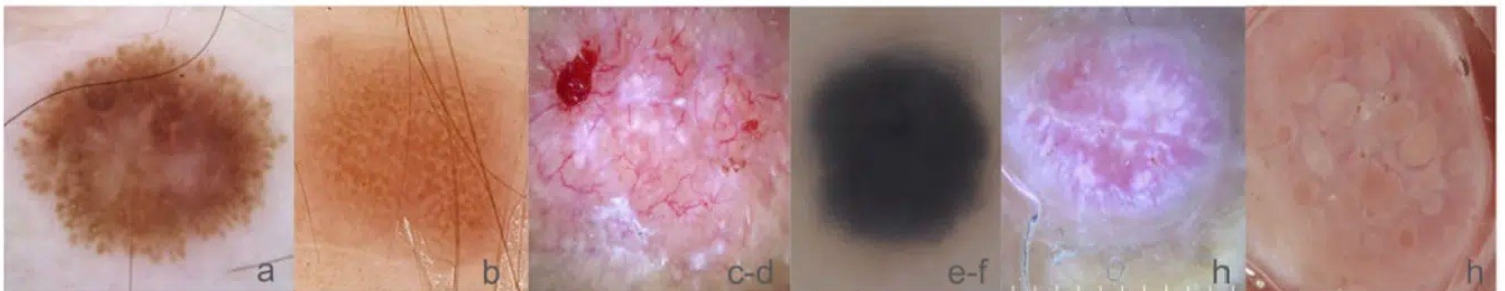
**4 structures**

**or**

**4 colors**

- a. Streaks forming a starburst pattern
- b. Negative network
- c. Vessels
- d. Ulceration

- e. Blue
- f. Black
- g. Gray
- h. White: Shiny structures<sup>oo</sup> & Circles



<sup>+</sup> DF - Additional structures: Firm papule with dimple sign, central shiny white lines seen with polarized light, central vascular blush/vessels, ring-like globules

<sup>++</sup> SK - Additional structures: Keratotic lesion with sharp demarcation and waxy stuck-on appearance

\* Step 2 only applies to lesions not identified as unequivocally benign: DF, SK, or angioma.

\*\* Step 3 only applies to lesions considered to be dermoscopically organized (symmetric).

<sup>oo</sup> Shiny white structures are only seen with polarized light